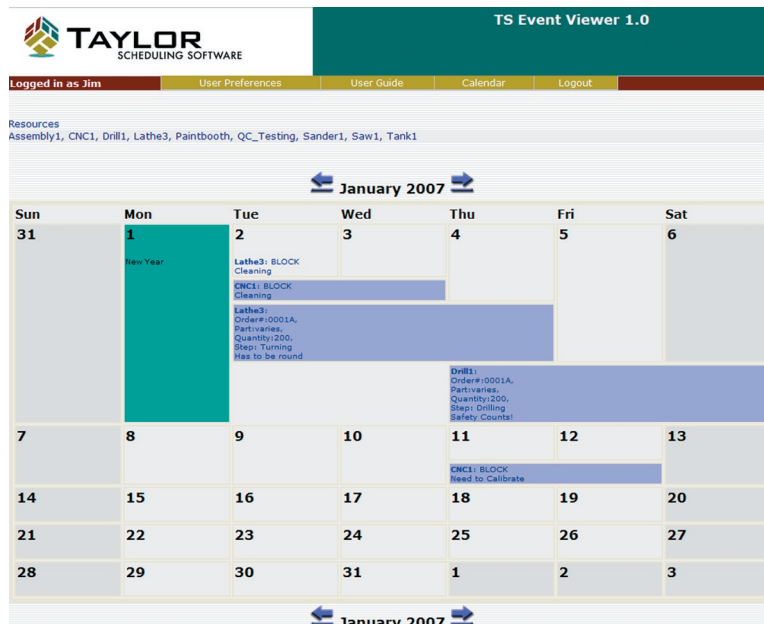
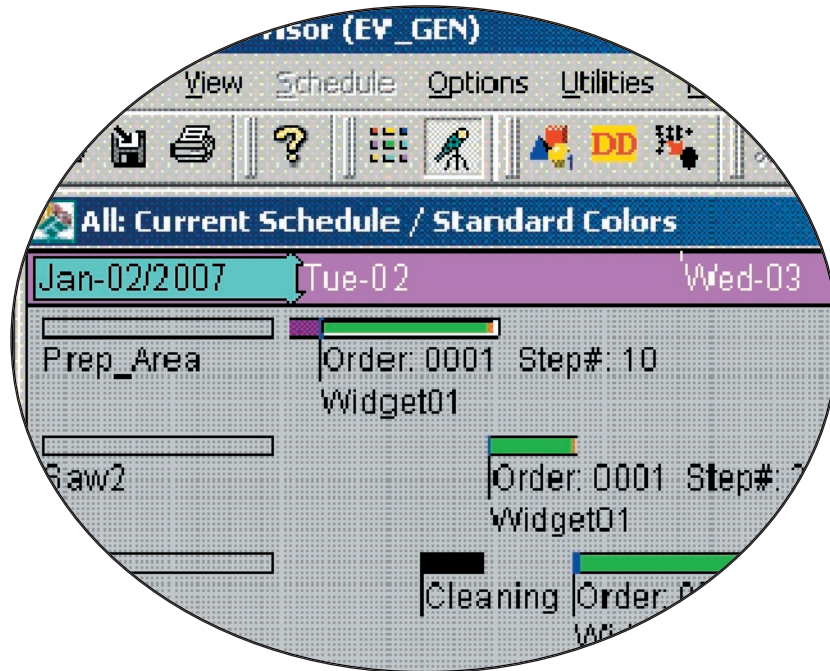


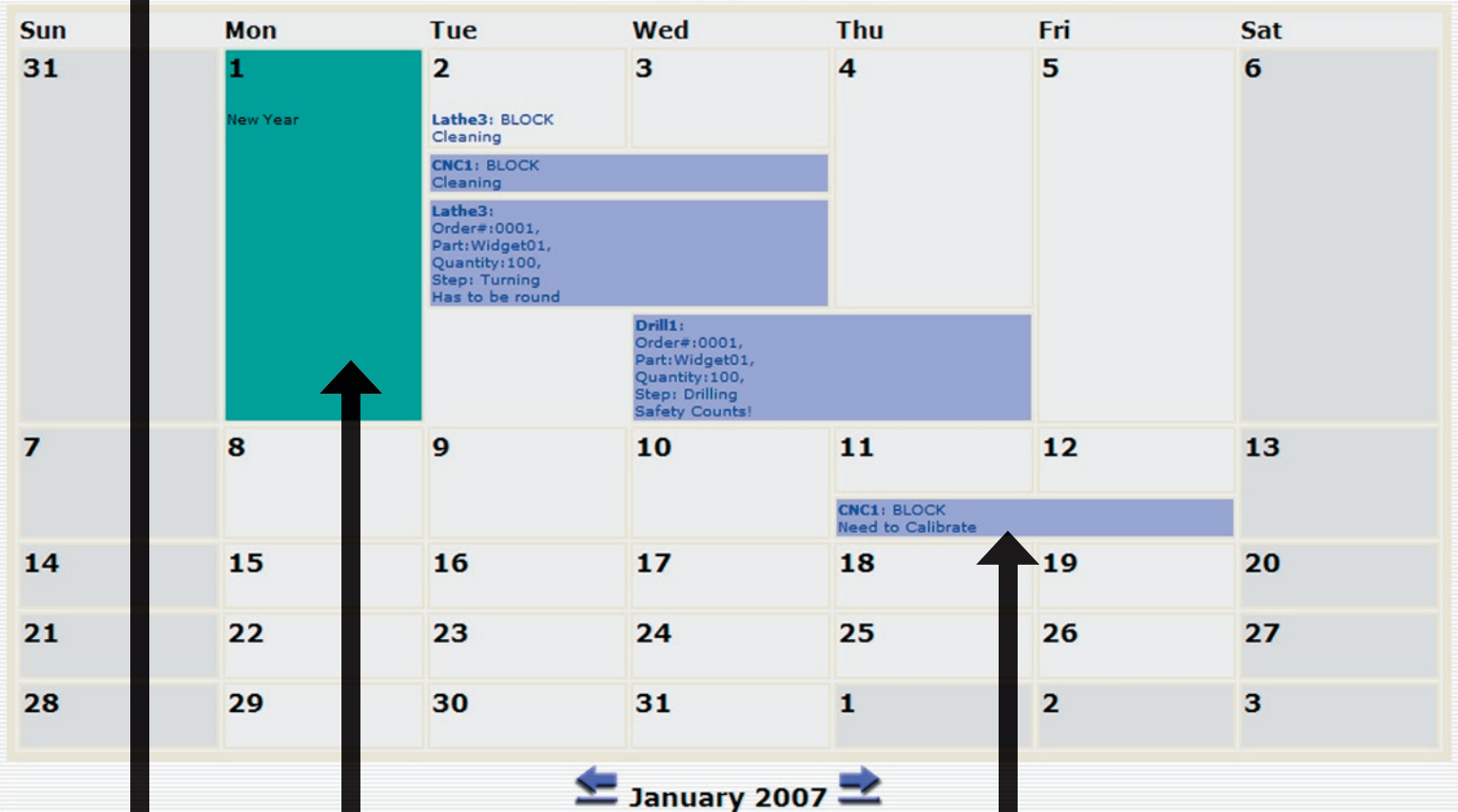
# TS EVENT VIEWER



## Resources

Assembly1, CNC1, Drill1, Lathe3, Paintbooth, QC\_Testing, Sander1, Saw1, Tank1

January 2007



THIS SHOWS WHICH MACHINES/EQUIPMENT YOU HAVE SPECIFIED

HOLIDAYS ARE SHOWN WITH A DIFFERENT BACKGROUND COLOR

Machine Block	
Machine Name	CNC1
Reason	Need to Calibrate
Start	01-11-2007 08:00
End	01-12-2007 16:00

- Easy to Install: TS Event Viewer comes with all required software for a quick and simple installation.
- Ease-of-use: The Calendar Layout View for displaying the data is intuitive and familiar, reducing the learning curve for staff.
- Current Data: All of the data that feeds the TS Event Viewer is linked and up-to-the-minute with the latest saved production schedule in Taylor Scheduler.
- Ready-to-use: No software is required for a user to launch TS Event Viewer except a web browser, and is available to any registered user from any computer on the company's intranet.
- Powerful: Because the TS Event Viewer can access data contained in Taylor Scheduler, it taps into your dynamic schedule and will display detailed information your colleagues want to know about the production schedule.

**Selected Resources**

Click on a resource to remove it from the selection list.

- Assembly1
- Assembly2
- CNC1
- CNC2
- Drill1
- Drill2
- Lathe1
- Lathe2
- Lathe3
- Lathe4

- Molding1
- Molding2
- Paintbooth
- QC\_Testing
- Sander1
- Sander2
- Saw1
- Saw2
- Tank1
- Tank2

**Unselected Resources**

Click on a resource to add it to the selection list.

- Prep\_Area

Save Resource Settings

**Continued Events Settings**

**Split Events**

See continued Split events only on the start date

See continued split events on each day for the duration of the event

**Campaign Setup Block Events**

See continued Campaign Setup Block events only on the start date

See continued Campaign Setup Block events on each day for the duration of the event

**Machine Block Events**

See continued Machine Block events only on the start date

See continued Machine Block events on each day for the duration of the event

**Holiday Events**

See continued Holiday events only on the start date

See continued Holiday events on each day for the duration of the event

Save Settings

**SELECT WHICH MACHINES/EQUIPMENT YOU NEED TO VIEW ON THE CALENDAR**

**SELECT HOW YOU WANT EVENTS TO SHOW UP ON THE CALENDAR**

Now you can share your production schedule with your entire organization via a web browser. Each user can configure the TS Event Viewer, creating their own personal view of the schedule details. Whether you are an equipment operator, department supervisor or the president, you can immediately see what is going on in the facility today, tomorrow and months in the future.

TS Event Viewer uses an intuitive calendar format to display selected information about the current production schedule. As the production schedule is updated, so is the TS Event Viewer, providing your organization with up-to-the-minute information they need to do their work more efficiently.

THIS IS AN EXAMPLE OF THE KIND OF DETAIL YOU CAN SPECIFY

<b>Machine Name</b>	Drill1
<b>Order number</b>	0001
<b>Part</b>	Widget01
<b>Customer</b>	
<b>Customer order</b>	AAA
<b>Original Quantity</b>	100
<b>Due date</b>	02-07-2007 16:07
<b>Earliest start</b>	01-01-2007 16:07
<b>Operation number</b>	40
<b>Sequence description</b>	Drilling
<b>Sequence notes</b>	Safety Counts!
<b>Split status</b>	Scheduled
<b>Scheduled start</b>	01-03-2007 18:59
<b>Scheduled end</b>	01-04-2007 12:33
<b>Scheduled setup duration</b>	30
<b>Scheduled run duration</b>	1000
<b>Scheduled cleanup duration</b>	24

THIS OPERATION SHOWS DETAILED INFORMATION ABOUT THIS STEP IN YOUR MANUFACTURING PROCESS

Users can easily navigate through the months to help them plan their activities.

By clicking on an event, your staff can see detailed information about operations, machine blocks, campaigns and holidays so they can plan their work schedules without having to call the scheduling department.

TS Event Viewer allows your sales department to see when their orders will be completed. Maintenance staff can plan maintenance knowing that the scheduler is aware of their plans.



TS Event Viewer is a browser-based calendar system that displays information contained in Taylor Scheduler. TS Event Viewer is an add-on module and licensed separately from Taylor Scheduler. Taylor Scheduler is our advanced planning and scheduling software and requires either an Oracle or SQL Server database.

System Requirements:

**TS EVENT VIEWER** runs on  
MS Internet Explorer 6.0 and above  
JBoss Application Server  
Java2 Runtime Environment Version 1.5 (Java5)

For More Information, please contact:

Taylor Scheduling Software  
4350, 10230 Jasper Ave  
Edmonton, Alberta  
Canada T5J4P6  
Phone: (780) 414-6718  
Fax: (780) 414-6716  
Web: <http://www.taylor.com>  
Email: [support@taylor.com](mailto:support@taylor.com)