

TS EVENT VIEWER



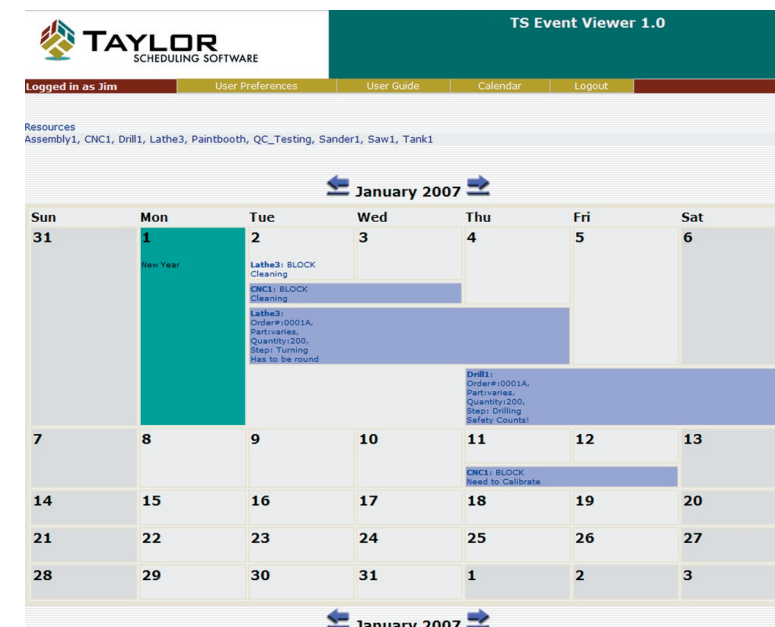
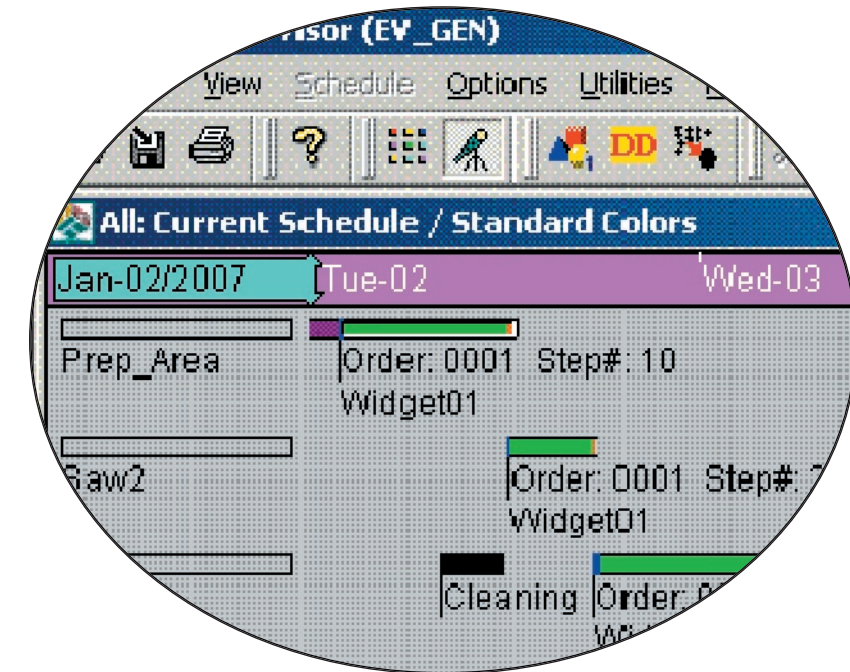
TS Event Viewer is a browser-based calendar system that displays information contained in Taylor Scheduler. TS Event Viewer is an add-on module and licensed separately from Taylor Scheduler. Taylor Scheduler is our advanced planning and scheduling software and requires either an Oracle or SQL Server database.

System Requirements:

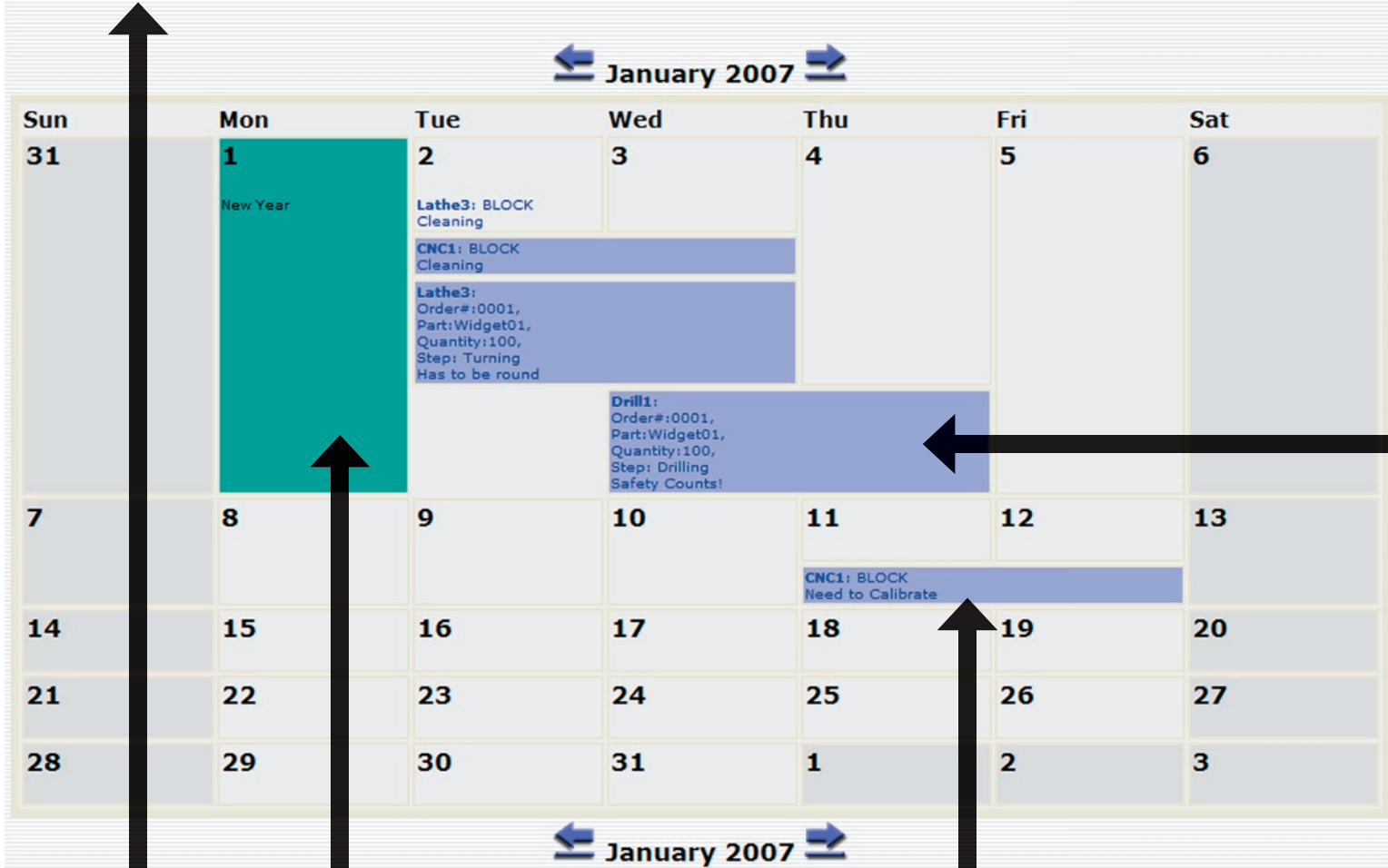
TS EVENT VIEWER runs on
 MS Internet Explorer 6.0 and above
 JBoss Application Server
 Java2 Runtime Environment Version 1.5 (Java5)

For More Information, please contact:

Taylor Scheduling Software
 #800, 10050 - 112 street
 Edmonton, Alberta
 Canada T5K 2J1
 Phone: (780) 414-6718
 Fax: (780) 414-6716
 Web: <http://www.taylor.com>
 Email: support@taylor.com



Resources
 Assembly1, CNC1, Drill1, Lathe3, Paintbooth, QC_Testing, Sander1, Saw1, Tank1



THIS SHOWS WHICH MACHINES/EQUIPMENT YOU HAVE SPECIFIED

HOLIDAYS ARE SHOWN WITH A DIFFERENT BACKGROUND COLOR

Machine Block	
Machine Name	CNC1
Reason	Need to Calibrate
Start	01-11-2007 08:00
End	01-12-2007 16:00

Selected Resources
 Click on a resource to remove it from the selection list.

- Assembly1
- Assembly2
- CNC1
- CNC2
- Drill1
- Drill2
- Lathe1
- Lathe2
- Lathe3
- Lathe4
- Molding1
- Molding2
- Paintbooth
- QC_Testing
- Sander1
- Sander2
- Saw1
- Saw2
- Tank1
- Tank2

Unselected Resources
 Click on a resource to add it to the selection list.

- Prep_Area

Save Resource Settings

SELECT WHICH MACHINES/EQUIPMENT YOU NEED TO VIEW ON THE CALENDAR

Continued Events Settings

Split Events

See continued Split events only on the start date

See continued split events on each day for the duration of the event

Campaign Setup Block Events

See continued Campaign Setup Block events only on the start date

See continued Campaign Setup Block events on each day for the duration of the event

Machine Block Events

See continued Machine Block events only on the start date

See continued Machine Block events on each day for the duration of the event

Holiday Events

See continued Holiday events only on the start date

See continued Holiday events on each day for the duration of the event

Save Settings

SELECT HOW YOU WANT EVENTS TO SHOW UP ON THE CALENDAR

Now you can share your production schedule with your entire organization via a web browser. Each user can configure the TS Event Viewer, creating their own personal view of the schedule details. Whether you are an equipment operator, department supervisor or the president, you can immediately see what is going on in the facility today, tomorrow and months in the future.

TS Event Viewer uses an intuitive calendar format to display selected information about the current production schedule. As the production schedule is updated, so is the TS Event Viewer, providing your organization

CLICK ON THIS OPERATION TO VIEW DETAILED INFORMATION ABOUT THIS STEP IN YOUR MANUFACTURING PROCESS

Machine Name	Drill1
Order number	0001
Part	Widget01
Customer	
Customer order	AAA
Original Quantity	100
Due date	02-07-2007 16:07
Earliest start	01-01-2007 16:07
Operation number	40
Sequence description	Drilling
Sequence notes	Safety Counts!
Split status	Scheduled
Scheduled start	01-03-2007 18:59
Scheduled end	01-04-2007 12:33
Scheduled setup duration	30
Scheduled run duration	1000
Scheduled cleanup duration	24

THIS IS AN EXAMPLE OF THE KIND OF DETAIL YOU CAN SPECIFY

with up-to-the-minute information they need to do their work more efficiently.

Users can easily navigate through the months to help them plan their activities.

By clicking on an event, your staff can see detailed information about operations, machine blocks, campaigns and holidays so they can plan their work schedules without having to call the scheduling department.

TS Event Viewer allows your sales department to see when their orders will be completed. Maintenance staff can plan maintenance knowing that the scheduler is aware of their plans.

- **Easy to Install:** TS Event Viewer comes with all required software for a quick and simple installation.
- **Ease-of-use:** The Calendar Layout View for displaying the data is intuitive and familiar – reducing the learning curve for staff.
- **Current Data:** All of the data that feeds the TS Event Viewer is linked and up-to-the-minute with the latest saved production schedule in Taylor Scheduler.
- **Ready-to-use:** No software is required for a user to launch TS Event Viewer except a web browser, and is available to any registered user from any computer on the company's intranet.
- **Powerful:** Because the TS Event Viewer can access data contained in Taylor Scheduler, it taps into your dynamic schedule and will display detailed information your colleagues want to know about the production schedule.